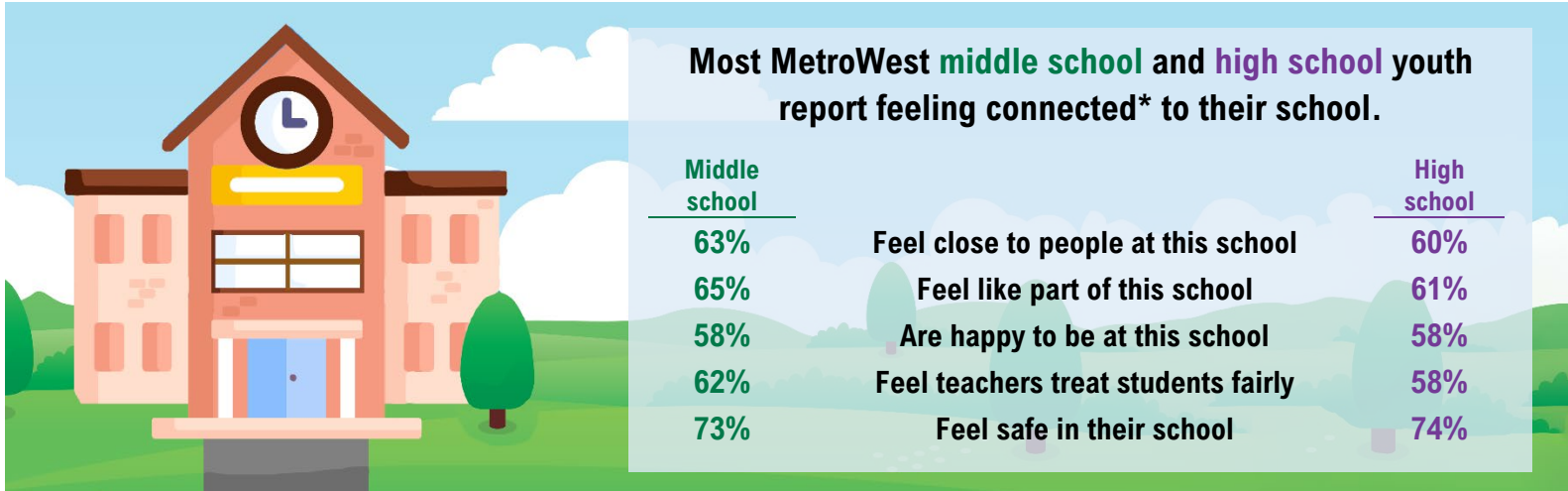
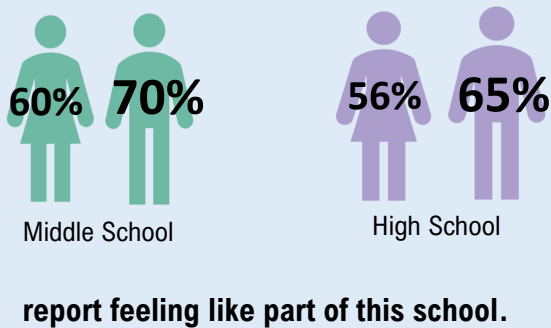


# School Connectedness Among MetroWest Adolescents

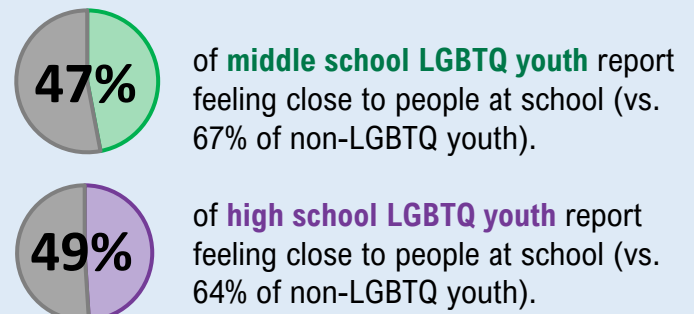
## Highlights from the 2021 MetroWest Adolescent Health Survey (Grades 7-12)



### School connectedness is lower among female youth. For example:

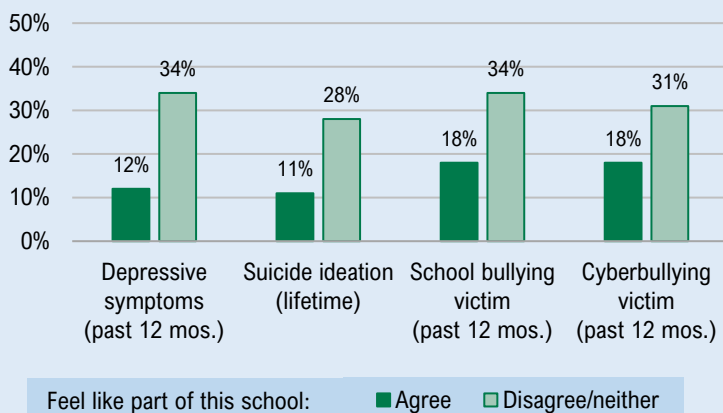


### School connectedness is lower among LGBTQ youth. For example:



### School connectedness\* in MetroWest is associated with lower reports of mental health problems and bullying victimization.†

Middle School (Grades 7-8)



High School (Grades 9-12)

